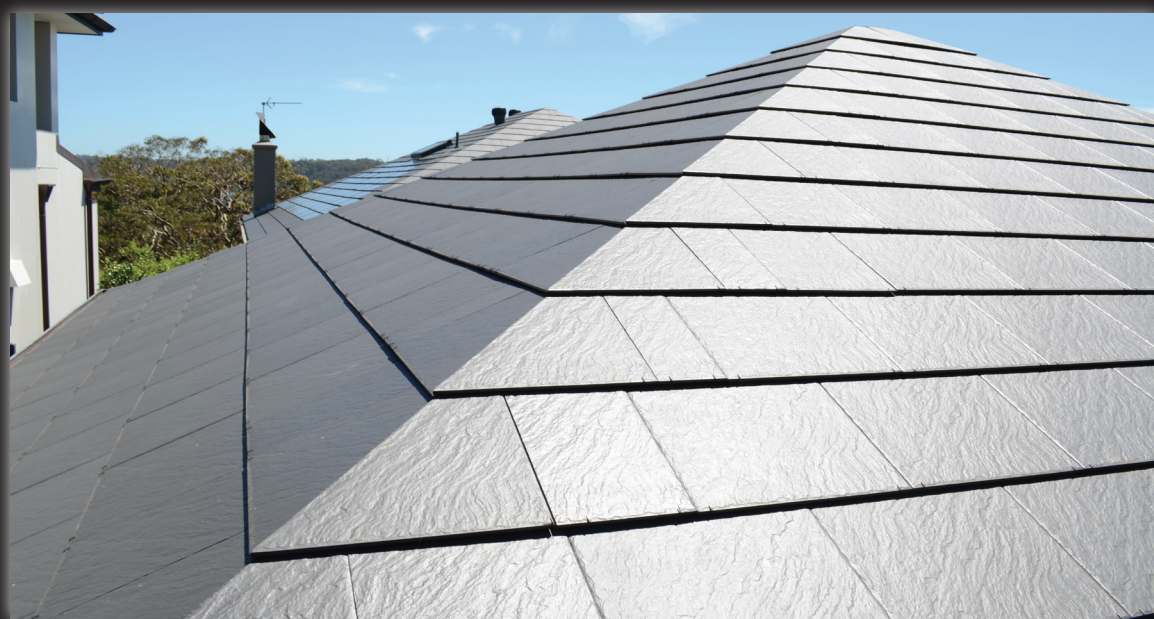




Roofing System ...Much more than a beautiful roof



Nulok Roofing System Installation Guide

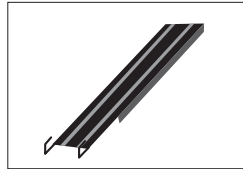
www.nulokroofing.com

This brochure provides information to help you install roofing Slate, Ceramic tiles and Nulok solar panels using the Nulok Roofing System. The Nulok Roofing System can be installed on almost any roof but please follow building codes in your area. We recommend that you view our animated installation video along with these instructions before working on the actual roof installation.

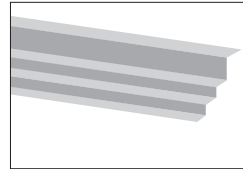
Go to www.nulokroofing.com/uk/videos

The installation process is very straightforward because there are only 3 components

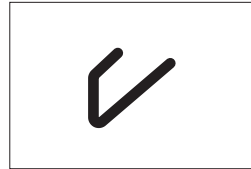
LINK CHANNEL



BATTEN

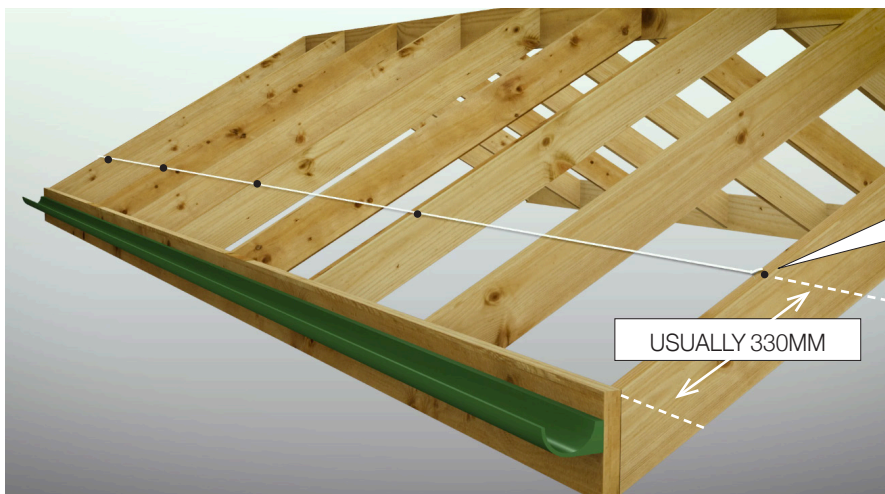
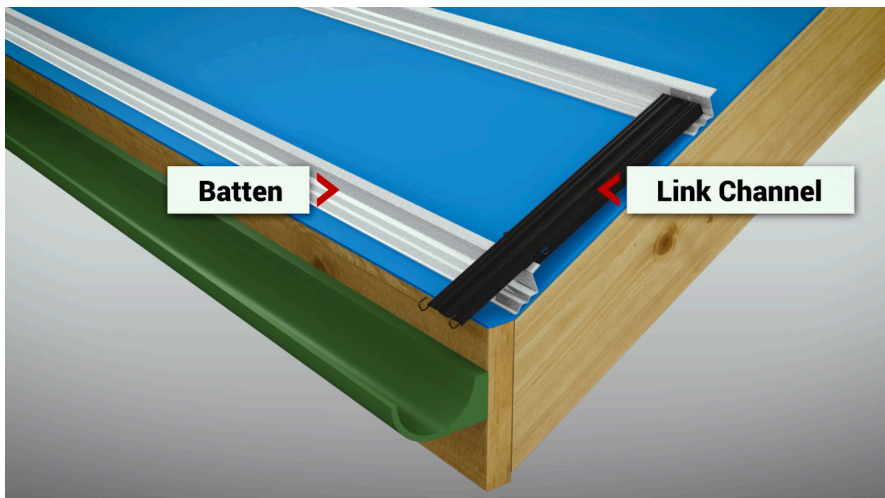


STAINLESS STEEL CLIP



1

Installation begins by locating the first batten position. To do this set up two battens with two link channels and a slate in place on the roof and see how far the slate needs to extend over the roof gutter. Then insert a “set out nail” at what will be the bottom of the second roof batten (this is usually 330mm from the front of the fascia board or rafter end if no fascia is being used). Then measure the distance from the nail to the end of the rafter, using this measurement insert another set out nail at the far end of the roof. String a line between the two set out nails and insert a series of set out nails on every second rafter or every metre on the roof base.

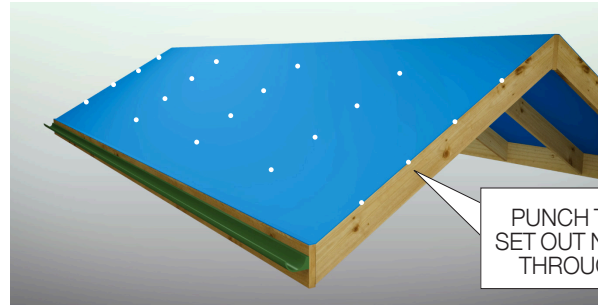


STRING A LINE BETWEEN THE TWO SET OUT NAILS AND INSERT A SERIES OF SET OUT NAILS ON EVERY SECOND RAFTER OR EVERY METRE ON THE ROOF BASE.



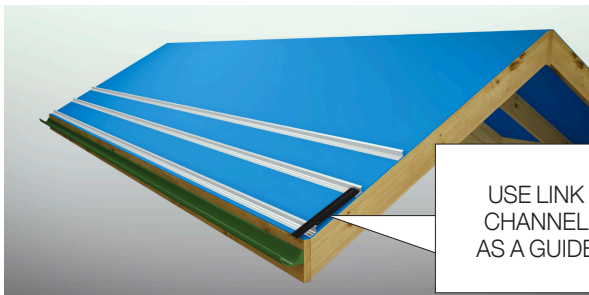
2

Roll out the protective barrier sheet (sarking or felt) and punch the set out nails through. Set the bottom of the second batten onto the row of set out nails and fasten it onto each rafter, using the set out nails as a guide - if the roof is plywood based, fasten counter battens every 600mm before starting - the end of each batten should fall on a rafter or counter batten. Using link channels, locate the next batten to position and fasten, then repeat the process to install all the battens across the roof area.

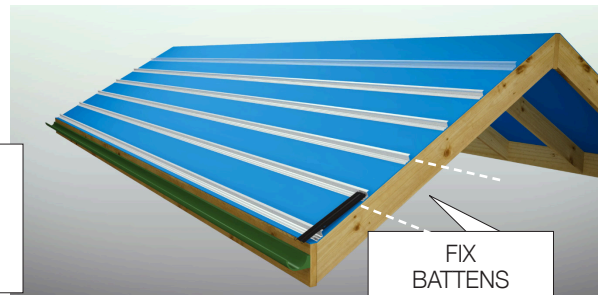


PUNCH THE SET OUT NAILS THROUGH

START ROLLING THE PROTECTIVE SHEET (SARKING) AND PUNCH THE SET OUT NAILS THROUGH



USE LINK CHANNEL AS A GUIDE

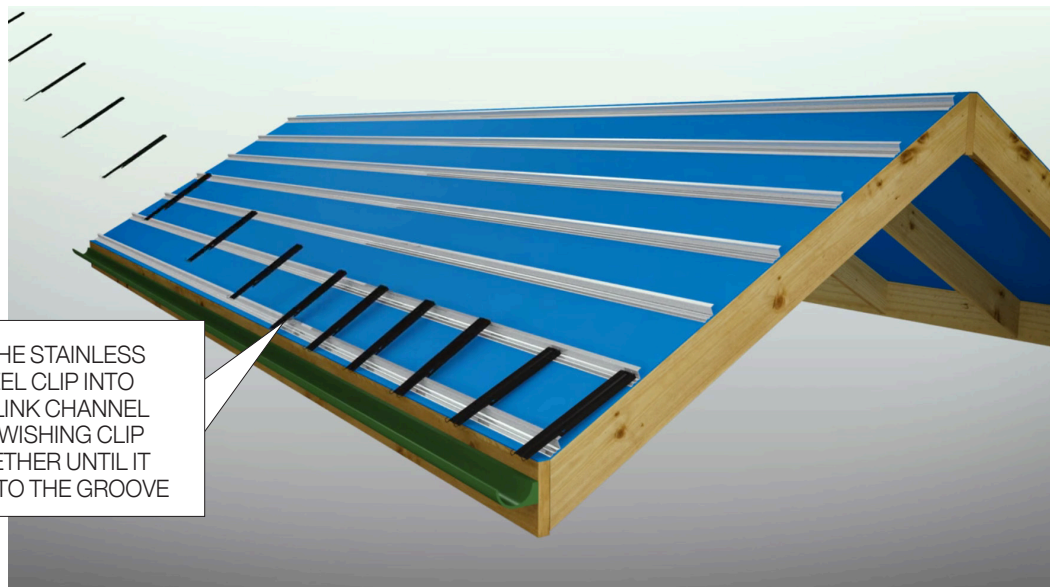


FIX BATTENS EVERY 600MM

FASTEN THE COUNTER BATTENS EVERY 600MM

3

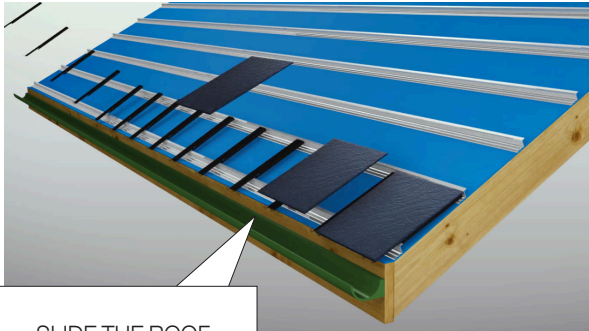
Before installing the link channels fit the stainless steel clip into the link channel by swishing clip together until it fits into the grooves on the sides of the link channels. Once the clips are in place the link channels can be locked between the first two rows of battens at centres to suit the slate width being used.



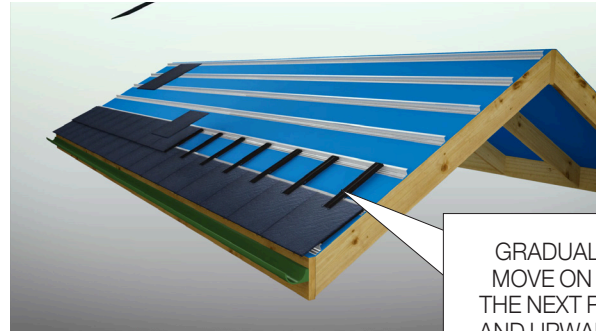
FIT THE STAINLESS STEEL CLIP INTO THE LINK CHANNEL BY SWISHING CLIP TOGETHER UNTIL IT FITS INTO THE GROOVE

4

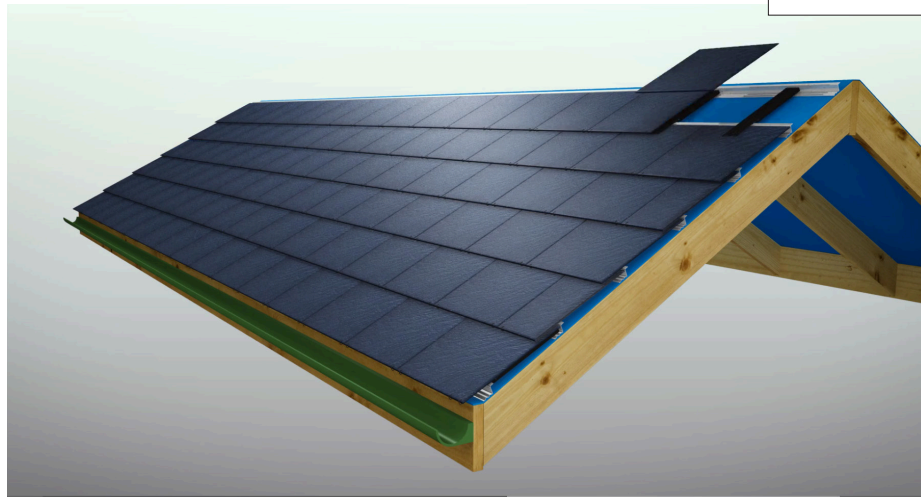
Begin to slide the first roof slate into the stainless steel hooks at the end of the link channel (remember the first slate should hang over the roof end-barge by 50mm and the first link channel will not be used as a water channel only to support the slate), ensuring that every slate is positioned correctly before moving onto the next. Then start the second row in a staggered half bond pattern alternating each row until roof is complete. This process will lock all of the slates onto the roof minimising the possibility of any slates loosening in heavy winds or storm conditions.



SLIDE THE ROOF COVERING (SLATE OR TILE) INTO PLACE

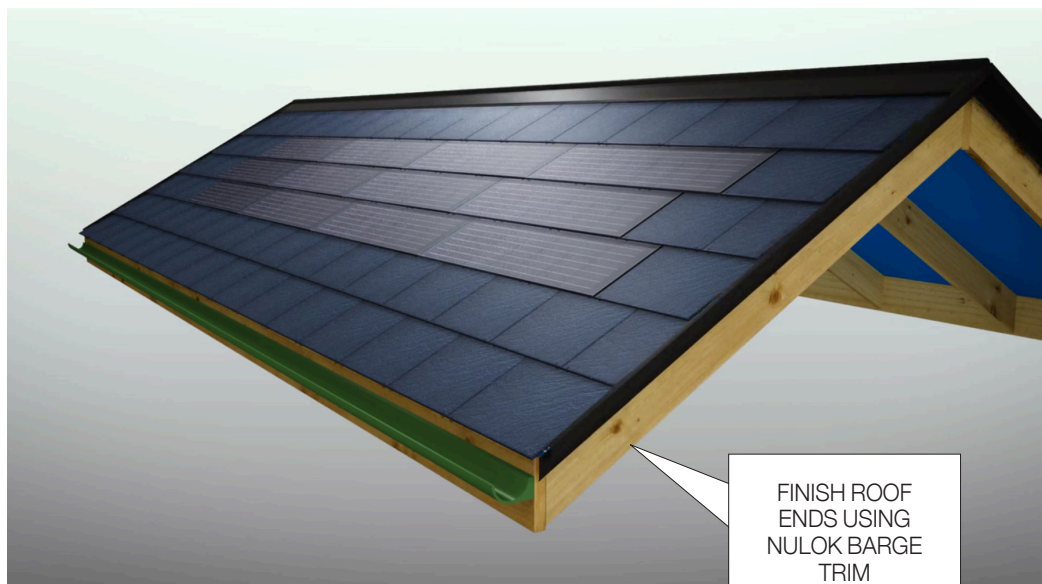


GRADUALLY MOVE ON TO THE NEXT ROW AND UPWARDS



5

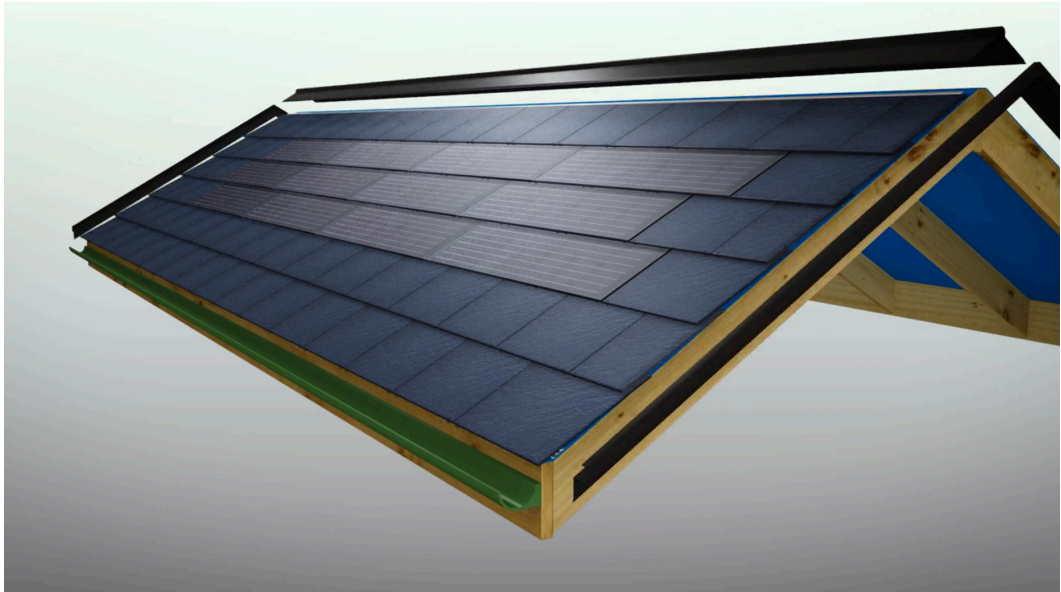
When all slates have been set in place, finish roof ends using Nulok barge trim, or finish with a timber trim. Any ridge capping can be used to finish the job, check what capping you want before starting the work.



FINISH ROOF ENDS USING NULOK BARGE TRIM

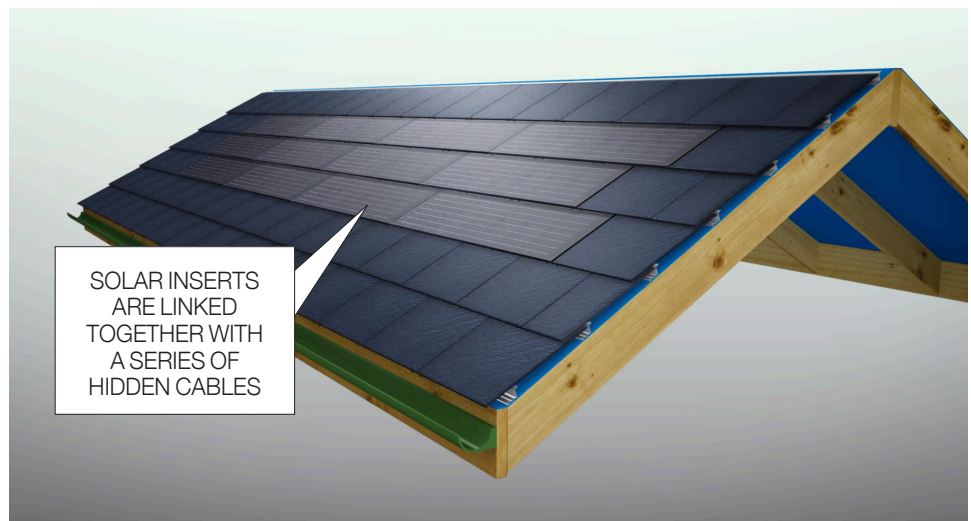
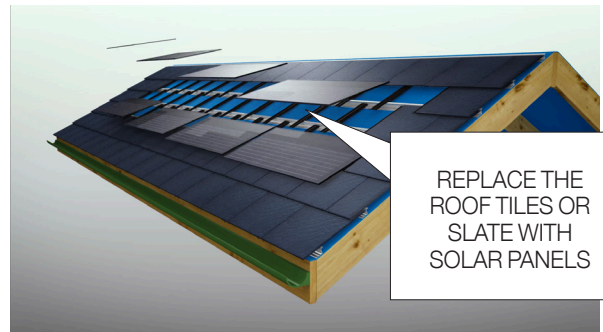
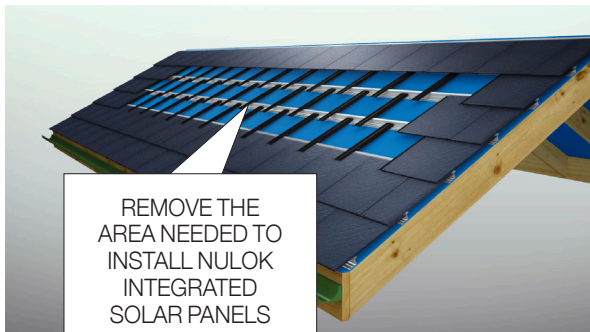
6

For a mitred ridge, a ridge flashing is installed before the last row of slates are glued into position. For mitred hips, install individual butterfly flashings spanning to link channels on either side of the hip.



7

Nulok integrated solar can be installed into any Nulok roof, by replacing the roof tiles or slate to provide hidden energy that won't compromise the roofline. Nulok solar inserts are linked together with a series of cables that are left inside the roof space for a qualified solar electrician to connect up to the inverter.





Roofing System ...Much more than a beautiful roof

For installation trouble shooting
Call 033 0123 4440



DISCLAIMER

Installation of the Nulok Roofing System should always take into account weather conditions and the safety requirements of installing an above ground, outside structure. Nulok Global Pty Ltd does not accept any liability for accidents or incidents that occur during product installation. The recommendations in the Nulok Installation Guide are based upon good building practice but are not an exhaustive statement of all the relevant information required. Furthermore, as the successful performance of the Nulok Roofing System depends upon numerous factors outside the control of Nulok Global Pty Ltd, it shall not be liable for the recommendations in the literature and the performance of the Nulok system. Including its suitability for any purpose or ability to satisfy the relevant provisions of the UK Building Code, regulations and standards.

paul@lilyash.com

www.nulokroofing.com