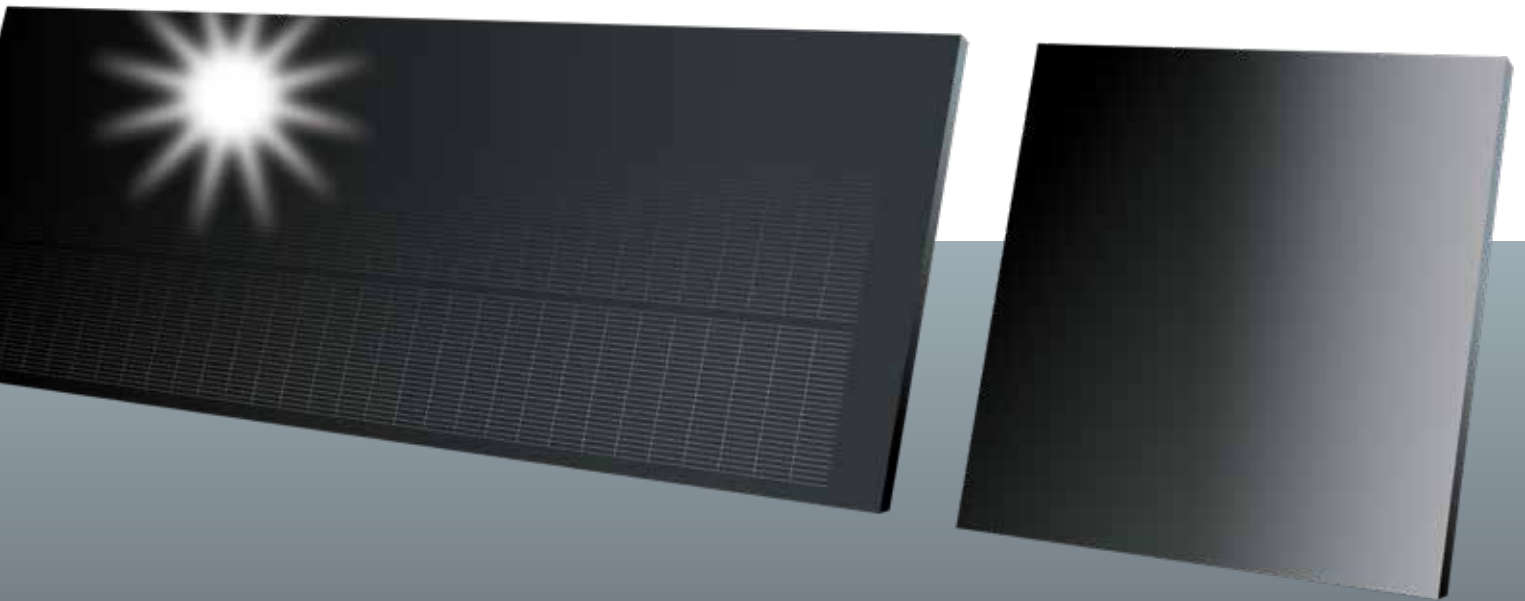




# SOLACTRIX<sup>®</sup>

Active and inactive solar tiles to create a seamless roof



## Active SolActrix<sup>®</sup> Solar Panels

SolActrix<sup>®</sup> Solar Panels are our new energy efficient panels producing 12% more power than its predecessors. SolActrix<sup>®</sup> is being used in residential, commercial and off-grid systems around the world. The success of SolActrix<sup>®</sup> is built on proven product performance, reliability, state of the art technology and long term partnerships with key customers around the world.

## inActive SolActrix<sup>®</sup> Glass Tiles

**COMING SOON**

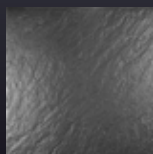
Made from Tempered Glass, SolActrix<sup>®</sup> Glass Tiles have approximately four times the mechanical and thermal strength of ordinary glass of equal thickness. SolActrix<sup>®</sup> tiles retain the normal properties of glass, including chemical resistance, hardness, expansion and deflection. This product will be launched soon.

**For Enquiries Call 033 0123 4440**

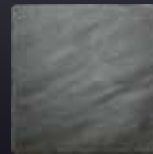
## Nulok Options



SolActrix<sup>®</sup> Active Solar Panels can be used with the current exiting Solution from Nulok Roofing. You have a choice of Ceramic Tile, Welsh Slate, Grey Slate or Argentinian Slate.



Ceramic Tile



Grey Slate



Welsh Slate



Black Slate

**Leading the solar roofing revolution**

# SolActrix 1200-400-60

SOLACTRIX SOLAR PANELS

## ELECTRICAL CHARACTERISTICS

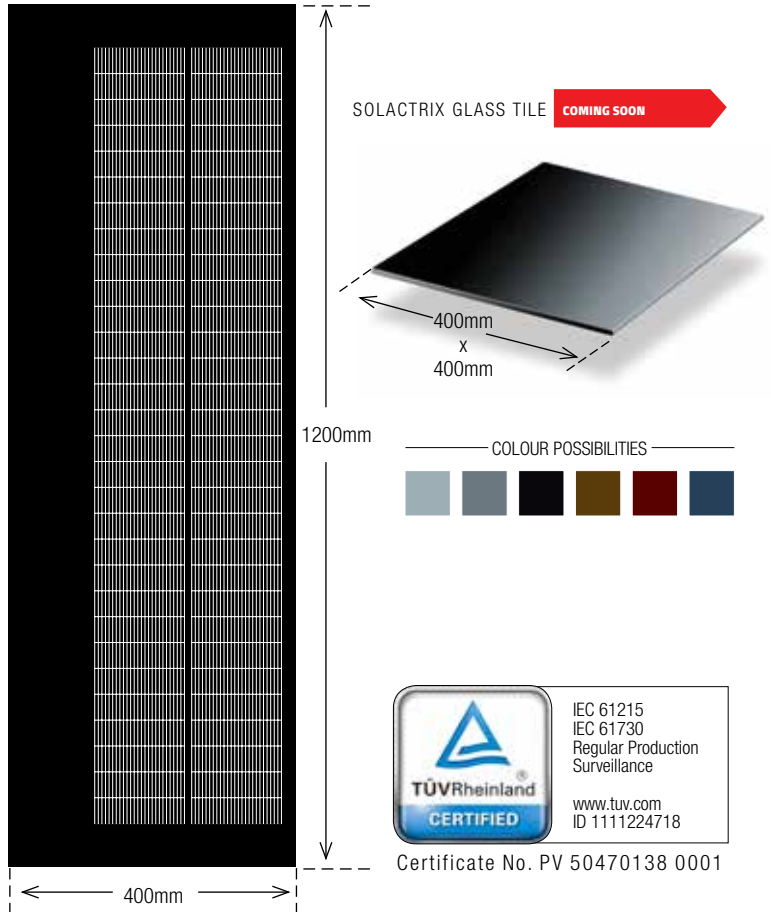
Module Type	SolActrix 1200-400-60
Maximum Power-Pmax (W)	60
Maximum Power Voltage-Vmp (V)	17.77
Maximum Power Current-Imp (A)	3.55
Open Circuit Voltage-Voc (V)	20.5
Short Circuit Current-Isc (A)	3.85
Power Tolerance (W)	±5
Maximum System Voltage (VDC)	1000
Maximum Series Fuse Rating (A)	5
Operating Temperature (°C)	-40~+85
Pmax Temperature Coefficient (%/°C)	-0.43
Voc Temperature Coefficient (%/°C)	-0.30
Isc Temperature Coefficient (%/°C)	0.05
STC: Irradiance 1000 W/m2 module temperature 25°C AM=1.5, Power measurement tolerance: +/-3%	

## MECHANICAL SPECIFICATIONS

External Dimension	1200*400*6 mm
Weight	6.6Kg
Solar Cell	Mono 31.35x156.75 mm (63/62pcs for -P)
Glass to Glass	2.5 mm tempered glass, low iron
Junction Box	IP67
Output Cable	4.0 mm <sup>2</sup> , cable length:350-900 mm
Connector	MC4 Compatible
Maximum Snow Load	5400 Pa or 550 Kg/mm <sup>2</sup>
Maximum Wind Load	2400 Pa or 244 Kg/mm <sup>2</sup>
Hail Resistance	Max. Ø 28 mm, at 23 m/s

## POWER WARRANTY

25 Years 80% Power Output Warranty
12 Years 90% Power Output Warranty
3 Years Material & Workmanship Warranty



# SOLACTRIX®

Nanjing Solglass Science & Technology Co Ltd  
 www.solglass.cn | solglass@163.com | Phone +86 25 5742 2616

**For Enquiries Call 033 0123 4440**

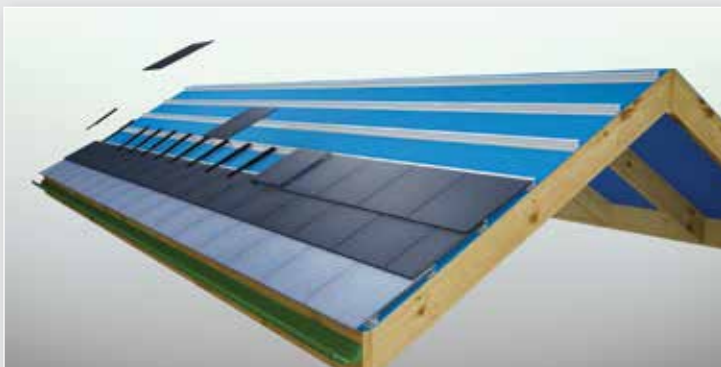


### Solglass and Nulok

Nulok is a unique Roofing System that locks the SolActrix® Tiles and SolActrix® Solar Inserts in place using metal battens and water channels. This incredibly robust system has many features over older methods, including faster installation, less weight and minimal product waste.

### Nulok Global Pty Ltd

www.nulokroofing.com | office@nuloknsw.com | Phone +61 2 9457 0888



**Leading the solar roofing revolution**